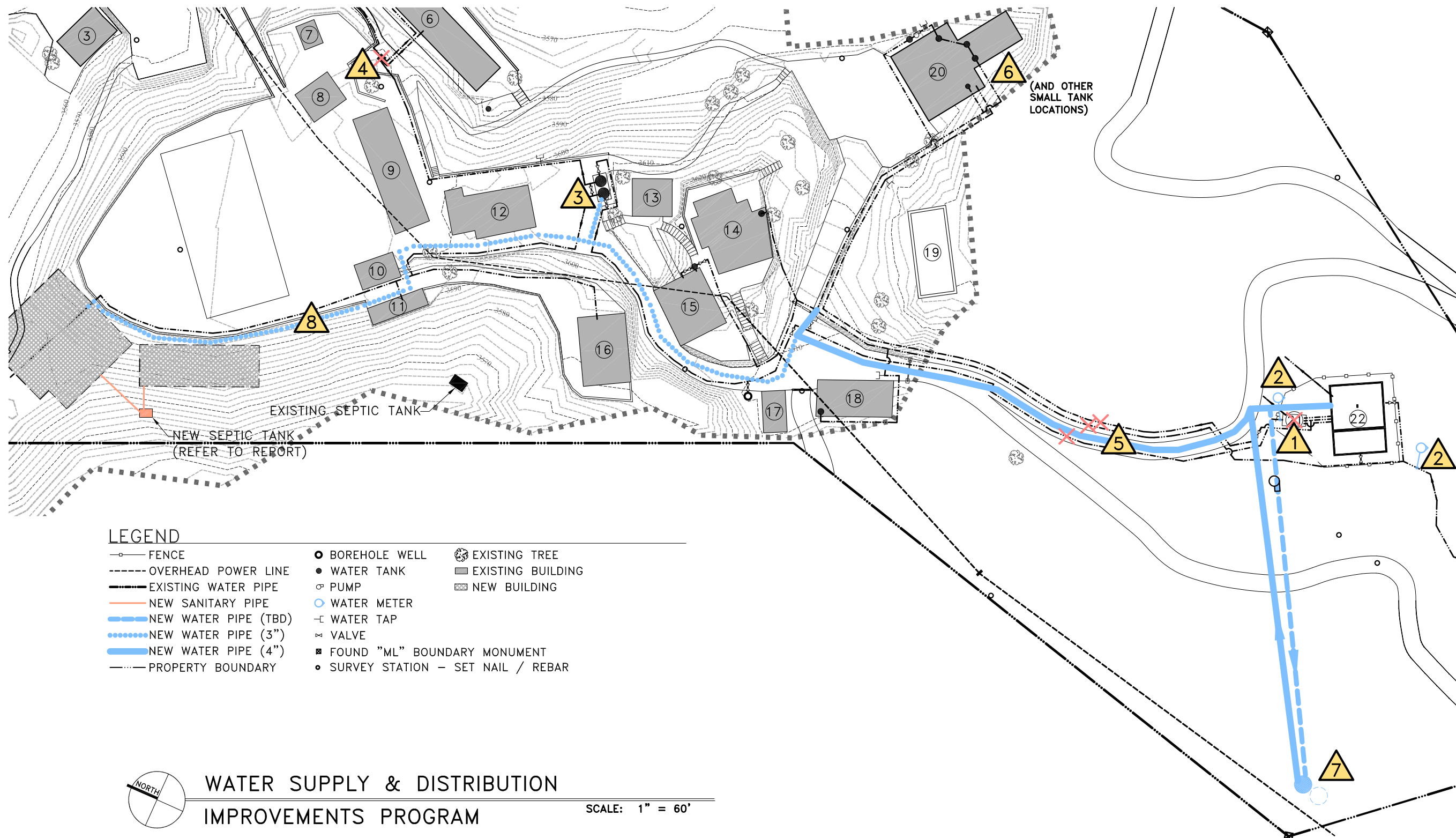


IMPROVEMENTS PROGRAM JOBS (IN ORDER OF EXECUTION)

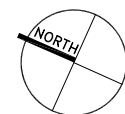
- 1** BYPASS SAND FILTER
CONNECT THE INLET PIPES OF THE SAND FILTER TO THE OUTLET PIPE GOING TO CAMPUS. WATER SHOULD FLOW IN A PIPELINE DIRECTLY FROM THE RESERVOIR TO CAMPUS.
- 2** INSTALL TWO WATER METERS
INSTALL THE FIRST ON THE 1½" PIPE COMING FROM THE SPRING BEFORE ANY PIPE CONNECTION AS SHOWN. INSTALL THE SECOND ON THE 2" PIPE COMING FROM THE RESERVOIR THROUGH THE FILTER. CALIBRATE WATER METERS AT THE SAME TIME, AND METER READINGS IN A LOG BOOK ON THE 1ST OF EACH MONTH.
- 3** LINK TWO MAIN TANKS
ELEVATE THE SHORTER OF THE TWO TANKS SO THAT THE OVERFLOW PIPES OF THE TWO 5,000 LITER PLASTIC TANKS ARE AT THE SAME LEVEL. LEAVE THE VALVE BETWEEN THE TANKS OPEN SO THEY FUNCTION AS ONE VOLUME.
- 4** BYPASS RED TANK
REMOVE THE RED TANK. CONNECT THE INLET AND OUTLET PIPES SO THAT WATER FLOWS IN A PIPELINE DIRECTLY FROM THE MAIN 5,000 LITER TANKS.

- 5** NEW PIPE FROM RESERVOIR
INSTALL A 4" DIAMETER GALVANIZED PIPE FROM A NEW RESERVOIR OUTLET TO THE AREA IN FRONT OF THE GUEST HOUSE. CONNECT THE EXISTING ON-CAMPUS PIPES TO THIS NEW PIPE, DISCONNECT AND ABANDON THE 3 OLD PIPES FROM THE RESERVOIR, SPRING, & FILTER AND REPLACE / RELOCATE THE SECOND WATER METER (FROM TASK 2) TO THE NEW 4" PIPELINE.
- 6** REMOVE SMALL WATER TANKS
CONNECT THE TANKS' INLET AND OUTLET PIPES AND REMOVE TANKS. ALTERNATIVELY, OUTFIT EVERY SMALL TANK WITH A HIGH-PRESSURE FLOAT VALVE.
- 7** NEW ELEVATED TANK & PUMP
INSTALL 15,000 LITERS OF WATER STORAGE IN THE SOUTHWEST CORNER OF THE PROPERTY ABOVE RESERVOIRS, IN THE FLAT AREA BESIDE ROAD. ALLOW ROOM FOR A SECOND SUCH VOLUME IN THE FUTURE. INSTALL A 1½ HP PUMP TO PUMP WATER FROM RESERVOIR UP TO TANK. CONNECT TANK TO THE 4" PIPE FROM TASK 5.
- 8** NEW PIPE TO FUTURE BOYS DORMS
AT THE END OF THE 4" PIPE (INSTALLED IN TASK 5), INSTALL A 3" DIAMETER GALVANIZED PIPE ALONG THE ROAD/PATH TO THE NEW BOYS DORMITORIES. CONNECT ADJACENT BUILDINGS TO THIS NEW 3" PIPE.



LEGEND

- | | | |
|---------------------------|-------------------------------------|---------------------|
| —○— FENCE | ● BOREHOLE WELL | ⊗ EXISTING TREE |
| - - - OVERHEAD POWER LINE | ● WATER TANK | ▒ EXISTING BUILDING |
| — EXISTING WATER PIPE | ○ PUMP | ▒ NEW BUILDING |
| — NEW SANITARY PIPE | ○ WATER METER | |
| — NEW WATER PIPE (TBD) | — WATER TAP | |
| ⋯ NEW WATER PIPE (3") | ⊗ VALVE | |
| — NEW WATER PIPE (4") | ■ FOUND "ML" BOUNDARY MONUMENT | |
| — PROPERTY BOUNDARY | ○ SURVEY STATION - SET NAIL / REBAR | |



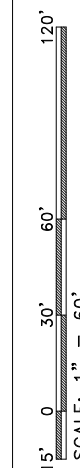
WATER SUPPLY & DISTRIBUTION IMPROVEMENTS PROGRAM

SCALE: 1" = 60'



SHANTI NIKETAN CHILDREN'S HOME
SUBATHU - 173206, HIMACHAL PRADESH

WATER SUPPLY & DISTRIBUTION IMPROVEMENTS PROGRAM



PROJECT NUMBER:	128210
DRAWN BY:	DMC
DRAWING ISSUE:	30 DEC 2012
REVISION:	DATE:
CHECKED:	DATE:
MJC	20.12.12

C1