



Email: info@emi2southasia.org  
 Web: www.emi2southasia.org  
 Phone: (91) 135.263.1059  
 Phone: (91) 135.263.3601

Environmental Management International  
 Oakkands, Landour Cantt.  
 Mussoorie, Uttarakhand 248179 India

# CONTACT US



## eMi has offices around the world...



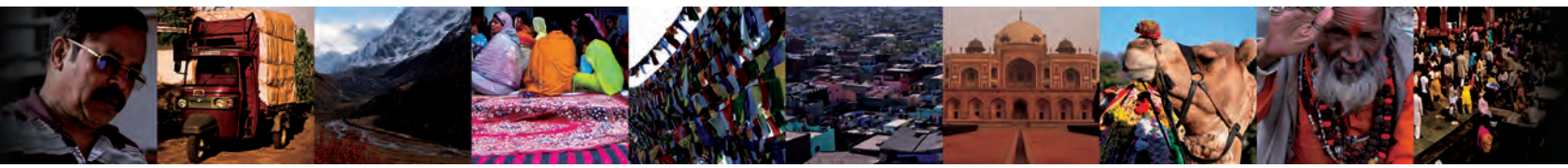
### who we are...

eMi is an Association of Christian Design Professionals: **architects, engineers, surveyors, construction managers** and others who seek to use their skills to **serve the poor in the developing world**. We serve indigenous and international Christian organizations that also have a heart to serve the poor, by providing **design assistance** that helps these organizations fulfill their calling. Our staff and volunteers serve from an overflow of the love of God in their own lives **because Jesus first loved us**.

### what we do...

We come alongside other Christian organizations at the front end of a development project. Our services help **turn their vision into reality**. We survey, master plan, and design a project to produce drawings, cost estimates, and brochures that are used to communicate with supporters and donors and begin construction of the project. Typically, we design **hospitals, orphanages, schools, ministry centers, and water systems** and meet many kinds of technical needs and challenges. This is done by sending a team at the invitation of a ministry and involving volunteer design professionals on projects. We have been doing this work **since 1982** and have designed **over 800 projects in more than 80 different countries**. We hope you will get involved with us!

Will you join us on a mission trip where you can serve a world in need with your design skills?



## we are the south asia office...

We are the **South Asia** office, otherwise known as **eMi²**. Located in Northern **India**, our office consists of staff, interns, and volunteers. We do a majority of our projects within India, but also serve the surrounding countries of Pakistan, Nepal, Bhutan, Bangladesh, Myanmar, and Sri Lanka. The South Asia office is one of **eMi²'s** three **field offices**, meaning we receive recruited volunteers, interns and staff from our three sending offices. The goal of a field office is to have a permanent presence and knowledge of the local culture in order to better **serve its region specifically**.



get involved at  
[www.emi2southasia.org](http://www.emi2southasia.org)



### Volunteer...

Volunteer as a professional with a team of people to serve a common goal. Project Trips are typically 10-14 days in-country, three seasons a year. Consider one of these options: Project Volunteer, Project+ Volunteer, or Long-Term Volunteer.

*click "Volunteer"*

### Intern...

Intern at our office for 4-6 months, or for a project+ 1-month internship. You will participate in a design project trip and work on **eMi²** projects in our office. Through design work, cultural immersion, and community living, we facilitate opportunities to explore God's calling upon your life.

*click "Intern"*

### Services...

Apply for **eMi²'s** services if your organization is in need of architectural or engineering design or construction management assistance.

*click "Client Services"*

### Staff...

Volunteer design staff work full-time with **eMi²** to assemble project teams, lead design trips, and publish project reports while mentoring interns in our office. This is an open door to combine your calling and skills to serve the poor.

*visit [www.emiworld.org](http://www.emiworld.org), click "About Us" then "Careers" for current staff needs*

### Support...

**eMi²** relies on the gifts of individuals and groups to operate in South Asia. Through Partnering, Sponsoring, Investing or Donation, you can help **eMi²** continue to offer free design service to ministries serving the poor.

*click "Donate"*

